

# IFE-GS

## Worm Drive Clamps German Style



[www.ife-group.com](http://www.ife-group.com)

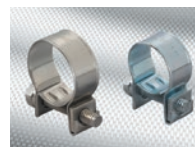


IFE German style worm drive clamps deliver higher clamping force than American style clamps at less torque. That means heavy equipment, recreational vehicles, and lawn and garden equipment can often use one of these 9 mm band width clamps instead of a 1/2" American style clamp at substantial savings. Discover the advantage of IFE German style worm drive clamps today!

- High clamping force
- Rolled edges minimize hose abrasion
- Non-slotted band eliminates hose extrusion
- Best option for performance versus price



IFE Americas is a global provider of sealing and retaining solutions to meet customer needs. We offer a wide range of clamps, couplings, straps, and sleeves, with in-house testing facilities and technical support.



# IFE-GS: Worm Drive Clamps German Style



[www.ife-group.com](http://www.ife-group.com)

- All sizes are available in 9mm and 12mm bandwidth and 7mm screw head.
- Special sizes and other materials are available for high-volume orders. Custom sizes with shorter or extended thread patterns are also available.
- Other material options exist including W1 (all zinc plated carbon steel screw, band and housing) and W5 (all 316 stainless steel screw, band and housing)
- Stock material options include W3 (all economy stainless steel screw, band and housing) and W4 (all 300 series stainless steel screw, band and housing).
- Other material options exist including W5 all 316 stainless steel and W3 (all economy stainless steel screw, band and housing)
- Clamps meet SAE J1508 Type F hose clamp specification

## 9 mm Band Width, 7mm Screw Head

W3 Part No.	W4 Part No.	Clamping Range mm
122 101 2703 0016	122 101 2704 0016	8-16
122 101 2703 0020	122 101 2704 0020	12-20
122 101 2703 0025	122 101 2704 0025	16-25
122 101 2703 0027	122 101 2704 0027	16-27
122 101 2703 0032	122 101 2704 0032	20-32
122 101 2703 0040	122 101 2704 0040	25-40
122 101 2703 0045	122 101 2704 0045	30-45
122 101 2703 0050	122 101 2704 0050	35-50
122 101 2703 0057	122 101 2704 0057	33-57
122 101 2703 0060	122 101 2704 0060	40-60
122 101 2703 0065	122 101 2704 0065	45-65
122 101 2703 0070	122 101 2704 0070	50-70
122 101 2703 0080	122 101 2704 0080	60-80
122 101 2703 0090	122 101 2704 0090	70-90
122 101 2703 0100	122 101 2704 0100	80-100
122 101 2703 0110	122 101 2704 0110	90-110
122 101 2703 0120	122 101 2704 0120	100-120

## 12 mm Band Width, 7mm Screw Head

W3 Part No.	W4 Part No.	Clamping Range mm
122 102 2703 0027	122 102 2704 0027	16-27
122 102 2703 0032	122 102 2704 0032	20-32
122 102 2703 0040	122 102 2704 0040	25-40
122 102 2703 0045	122 102 2704 0045	30-45
122 102 2703 0050	122 102 2704 0050	35-50
122 102 2703 0060	122 102 2704 0060	40-60
122 102 2703 0070	122 102 2704 0070	50-70
122 102 2703 0080	122 102 2704 0080	60-80
122 102 2703 0090	122 102 2704 0090	70-90
122 102 2703 0100	122 102 2704 0100	80-100
122 102 2703 0110	122 102 2704 0110	90-110
122 102 2703 0120	122 102 2704 0120	100-120
122 102 2703 0130	122 102 2704 0130	110-130
122 102 2703 0140	122 102 2704 0140	120-140
122 102 2703 0150	122 102 2704 0150	130-150
122 102 2703 0160	122 102 2704 0160	140-160
122 102 2703 0170	122 102 2704 0170	150-170
122 102 2703 0180	122 102 2704 0180	160-180
122 102 2703 0190	122 102 2704 0190	170-190
122 102 2703 0200	122 102 2704 0200	180-200
122 102 2703 0210	122 102 2704 0210	190-210
122 102 2703 0220	122 102 2704 0220	200-220

Due to our program of continuous improvement, specifications may be subject to change.

### IFE Americas USA

12877 Emerson Drive, Suite 200  
Brighton, MI 48116  
**Phone:** +1 (248) 446-1900  
**E-mail:** [info@ife-group.com](mailto:info@ife-group.com)

### IFE Americas México

Bernardo Quintana 7001 Torre 2 – 813  
Col. Centro Sur. Querétaro, Qro. 76090  
**Phone:** +52 (442) 245-1515  
**E-mail:** [info@ife-group.com](mailto:info@ife-group.com)

### IFE Europe Sweden

Banérgatan 51  
SE-115 22 Stockholm  
**Phone:** +46 708 102 711  
**E-mail:** [info@ife-group.com](mailto:info@ife-group.com)

