

# IFE-DWT-RO

## Semi Rigid Heat Shrinkable Tubing with Meltable Liner



[www.ife-group.com](http://www.ife-group.com)



IFE-DWT-RO has excellent mechanical strength, sealing property, chemical/fluid resistance, insulation and is widely used for all kinds of automotive wire harness and cable protection.

**Material Outer jacket:** Cross-linked modified polyolefin

**Inner wall:** Modified hot melt adhesive.

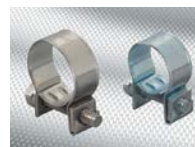
**ShrinkRatio:** 4:1

**Characteristics:**

- Semi-rigid
- Flame-retardant
- Good mechanical, electric and chemical resistance
- Excellent sealing properties
- Operating temperature range: -40°C - 125°C
- Shrinking temperature: 100°C - 150°C
- Color: Black



IFE Americas is a global provider of sealing and retaining solutions to meet customer needs. We offer a wide range of clamps, couplings, straps, and sleeves, with in-house testing facilities and technical support.



# IFE-DWT-RO: Semi Rigid Heat Shrinkable Tubing with Meltable Liner



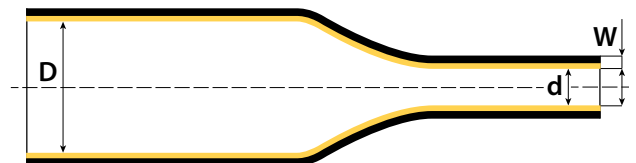
[www.ife-group.com](http://www.ife-group.com)

## Specifications

Item	Test Method	Result
Longitudinal shrink ratio	ASTM D2671	-10~ 0%
Tensile strength	ASTM D2671	≥10.4 MPa
Elongation ratio at break	ASTM D2671	≥200 %
Low temperature flexibility	ASTM D2671	(-40±2°C, 4h±15min) No cracks in outer wall
Ageing in circulating-air oven	158±3°C, 168±2h	Completed
Tensile strength after ageing	ASTM D2671	≥7.3 MPa
Elongation ratio at break after ageing	ASTM D2671	≥100%
Dielectric strength	ASTM D2671	≥19.7 kv/mm
Flammability	ASTM D2671 (Method B)	Self-extinguishing within 60s
Volume resistance	ASTM D2671	≥1012 Ω.cm
Heat shock	ASTM D2671 (250°C/4h)	No dripping, cracking or melting of outer wall
Specific Gravity (outer wall only)	ASTM D 2671	1.35 maximum
Secant Modulus	ASTM D 882 Procedure A at 2% strain	225 MPa minimum
Concentricity		75% minimum
Copper Mirror Corrosion	ASTM D 2671 Procedure A 16 h at 121°C	No Corrosion

## Standard sizes for IFE-DWT-RO (ShrinkRatio:4:1)

Size	As Supplied (mm)		After Recovery (mm)	
	Minimum Inside diameter(D)	Maximum Inside Diameter(d)	Total Wall-thickness(W)	
4.00	4.00	1.00	1.00	
5.75	5.75	1.25	1.15	
7.40	7.40	1.65	1.40	
9.02	9.02	2.30	1.52	
11.0	11.0	2.40	1.80	
14.0	14.0	3.00	2.10	
18.3	18.3	4.35	2.10	



Note: Other dimensions and colors are also available according to customer requirements

Due to our program of continuous improvement, specifications may be subject to change.

### IFE Americas USA

12877 Emerson Drive, Suite 200  
Brighton, MI 48116  
**Phone:** +1 (248) 446-1900  
**E-mail:** [info@ife-group.com](mailto:info@ife-group.com)

### IFE Americas México

Bernardo Quintana 7001 Torre 2 – 813  
Col. Centro Sur. Querétaro, Qro. 76090  
**Phone:** +52 (442) 245-1515  
**E-mail:** [info@ife-group.com](mailto:info@ife-group.com)

### IFE Europe Sweden

Banérgatan 51  
SE-115 22 Stockholm  
**Phone:** +46 708 102 711  
**E-mail:** [info@ife-group.com](mailto:info@ife-group.com)

