

IFE-AS

Worm Drive Clamps American Style



www.ife-group.com

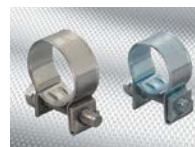


IFE-AS Clamps embrace the traditional hose clamp design, earning their reputation as the most popular choice in the Americas. With an interlocked construction, these clamps boast unwavering durability without the need for welding.

- Liner version of the clamp is available with an inner liner that protects hoses and soft components from damage due to the slots in the band.
- Excellent design for holding signs, flags, small vessels and filters securely in place.



IFE Americas is a global provider of sealing and retaining solutions to meet customer needs. We offer a wide range of clamps, couplings, straps, and sleeves, with in-house testing facilities and technical support.



IFE-AS: Worm Drive Clamps American Style



www.ife-group.com

- Available in 1/2" (12.7 mm) bandwidth with 5/16" (8 mm) screw head as well as a micro version in 5/16" (8 mm) bandwidth and 1/4" (6.3 mm) screw head
- Stock material options include W2 (economy stainless steel band and housing with zinc plated carbon steel screw) and W4 all 300 series stainless steel.
- Other material options exist including W5 all 316 stainless steel and W3 (all economy stainless steel screw, band and housing)
- Clamps meet SAE J1508 Type F hose clamp specification
- Custom sizes with shorter or extended thread patterns are also available. Larger sizes available upon request.

5/16" (8 mm) Band Width, 1/4" (6.3 mm) Screw Head

W2 Part No.	W4 Part No.	Clamping Range inch (mm)	SAE Size
122 114 2602 0016	122 114 2604 0016	7/32-5/8 (6-16)	4
122 114 2602 0020	122 114 2604 0020	7/16-25/32 (11-20)	6
122 114 2602 0023	122 114 2604 0023	1/2-7/8 (13-23)	8
122 114 2602 0027	122 114 2604 0027	9/16-1-1/16 (14-27)	10
122 114 2602 0032	122 114 2604 0032	11/16-1-1/4 (17-32)	12
122 114 2602 0038	122 114 2604 0038	1/2-1-1/2 (13-38)	16

1/2" (12.7 mm) Band Width, 5/16" (8 mm) Screw Head

W2 Part No.	W4 Part No.	Clamping Range inch (mm)	SAE Size
122 113 2802 0019	122 113 2804 0019	1/2-13/16 (13-19)	6
122 113 2802 0023	122 113 2804 0023	7/16-7/8 (11-23)	8
122 113 2802 0027	122 113 2804 0027	9/16-1-1/16 (14-27)	10
122 113 2802 0032	122 113 2804 0032	11/16-1-1/4 (18-32)	12
122 113 2802 0038	122 113 2804 0038	11/16-1-1/2 (19-38)	16
122 113 2802 0044	122 113 2804 0044	13/16-1-3/4 (21-44)	20
122 113 2802 0051	122 113 2804 0051	1-1/16-2 (27-51)	24
122 113 2802 0057	122 113 2804 0057	1-5/16-2-1/4 (33-57)	28
122 113 2802 0064	122 113 2804 0064	1-9/16-2-1/2 (40-64)	32
122 113 2802 0070	122 113 2804 0070	1-13/16-2-3/4 (46-70)	36
122 113 2802 0076	122 113 2804 0076	2-1/16-3 (52-76)	40
122 113 2802 0083	122 113 2804 0083	2-5/16-3-1/4 (59-83)	44
122 113 2802 0089	122 113 2804 0089	2-9/16-3-1/2 (65-89)	48
122 113 2802 0095	122 113 2804 0095	2-13/16-3-3/4 (71-95)	52
122 113 2802 0102	122 113 2804 0102	3-1/16-4 (78-102)	56
122 113 2802 0108	122 113 2804 0108	3-5/16-4-1/4 (84-108)	60
122 113 2802 0114	122 113 2804 0114	3-9/16-4-1/2 (90-114)	64
122 113 2802 0127	122 113 2804 0127	4-1/8-5 (103-127)	72
122 113 2802 0140	122 113 2804 0140	4-5/8-5-1/2 (118-140)	80
122 113 2802 0152	122 113 2804 0152	5-1/8-6 (130-152)	88
122 113 2802 0165	122 113 2804 0165	5-5/8-6-1/2 (143-165)	96
122 113 2802 0178	122 113 2804 0178	6-1/8-7 (154-178)	104



Due to our program of continuous improvement, specifications may be subject to change.

IFE Americas USA

12877 Emerson Drive, Suite 200
Brighton, MI 48116
Phone: +1 (248) 446-1900
E-mail: info@ife-group.com

IFE Americas México

Bernardo Quintana 7001 Torre 2 – 813
Col. Centro Sur. Querétaro, Qro. 76090
Phone: +52 (442) 245-1515
E-mail: info@ife-group.com

IFE Europe Sweden

Banérkatan 51
SE-115 22 Stockholm
Phone: +46 708 102 711
E-mail: info@ife-group.com

