



IFE-PC Heavy-Duty Pipe Clamps



IFE's heavy-duty pipe clamps are as versatile as they are strong. They deliver exceptional clamping force, and with a simple modification make great pipe hangers (in exhaust applications, for example). Choose from over 30 diameters and 3 band widths.

- Ideal solution for exhaust applications and more
- Corrosion-resistant zinc finish (hexavalent chromium-free)
- Heavy-duty design & materials
- Easily modified for pipe hanging
- Rugged band withstands high vibration for pipe clamping
- Can be used with M8, M10 or M12 bolt (size-dependent)
- 3 band widths available (size-dependent)

www.ife-group.com



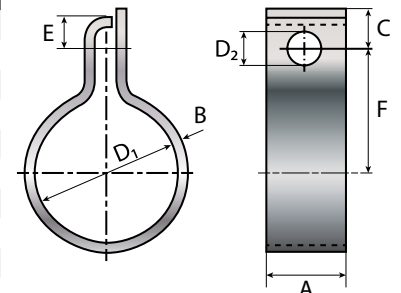
IFE Americas USA
7000 Kensington Road
Brighton, MI 48116-8334
Phone: +1 (248) 446-1900 **E-mail:** info@ife-group.com

IFE Americas México
Bernardo Quintana 7001 Torre 2 – 813
Col. Centro Sur. Querétaro, Qro. 76090
Phone: +52 (442) 245-1515 **E-mail:** victor.velazquez@ife-group.com

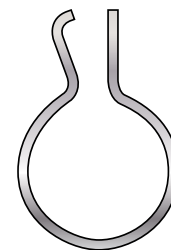
IFE-PC Heavy-Duty Pipe Clamps



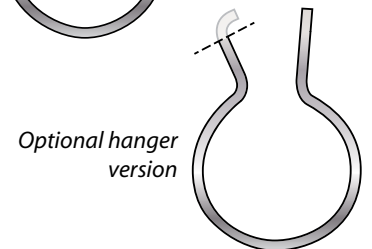
IFE Part Number	Restrained Diameter (D ₁)	Pipe O.D.	Bolt Hole Center to Top of Flat (C)	Bolt Hole Diameter (D ₂)	Bolt Hole Center to Top of Curve (E)	Clamp Center from Top (F)	Material Width (A) x Thickness (B)
17401542901030	30.2	30	10	8.4	8	28	20 x 2
17401542901032	32.2	30	10	8.4	8	29	20 x 2
17401542901035	35.2	35	10	8.4	8	30.5	20 x 2
17401542901037	37.2	35	10	8.4	8	31.5	20 x 2
17401542901040	40.3	40	16	8.4	14	33.5	25 x 3
17401542901042	42.3	40	16	8.4	14	34.5	25 x 3
17401542901045	45.5	45	16	8.4	14	36.5	25 x 3
17401542901048	48.5	45	16	8.4	14	38	25 x 3
17401542901050	50.5	50	16	8.4	14	38.5	25 x 3
17401542901053	53.5	50	16	8.4	14	40	25 x 3
17401542901055	55.5	55	16	8.4	14	41.5	25 x 3
17401542901058	58.5	55	16	8.4	14	43	25 x 3
17401542901060	60.5	60	16	8.4	14	44	25 x 3
17401542901063	63.5	60	16	8.4	14	45.5	25 x 3
17401542901065	65.5	65	16	8.4	14	46.5	25 x 3
17401542901068	68.5	65	16	8.4	14	48	25 x 3
17401542901070	70.5	70	17	10.5	15	50.5	30 x 4
17401542901073	73.5	70	17	10.5	15	52	30 x 4
17401542901075	75.5	75	17	10.5	15	53	30 x 4
17401542901078	78.5	75	17	10.5	15	54.5	30 x 4
17401542901080	80.5	78	17	10.5	15	55.5	30 x 4
17401542901083	83.5	85	17	10.5	15	57	30 x 4
17401542901085	85.5	85	17	10.5	15	58	30 x 4
17401542901089	89.5	85	17	10.5	15	60	30 x 4
17401542901090	90.5	90	17	10.5	15	61	30 x 4
17401542901094	94.5	90	17	10.5	15	63	30 x 4
17401542901100	100.5	100	17	10.5	15	66	30 x 4
17401542901105	104.5	100	17	10.5	15	68	30 x 4
17401542901110	110.5	110	19	13	17	75	30 x 4
17401542901114	114.5	110	19	13	17	77	30 x 4
17401542901120	120.5	120	19	13	17	85	30 x 4
17401542901124	124.5	120	19	13	17	87	30 x 4



Heavy-duty pipe clamp or hanger, restrained condition



Standard clamp, shipping condition



Optional hanger version

Due to our program of continuous improvement, specifications may be subject to change.

All sizes in mm

Material: ASTM A283C-A structural steel

Coating: Zinc with trivalent silver chromate (hexavalent chrome-free)

www.ife-group.com



ISO 9001:2015

IFE Americas is a global provider of sealing and retaining solutions to meet customer needs. We offer a wide range of clamps, couplings, straps, and sleeves, with in-house testing facilities and technical support.



IFE Americas USA

7000 Kensington Road
Brighton, MI 48116-8334

Phone: +1 (248) 446-1900 E-mail: info@ife-group.com

IFE Americas México

Bernardo Quintana 7001 Torre 2 – 813
Col. Centro Sur. Querétaro, Qro. 76090

Phone: +52 (442) 245-1515 E-mail: victor.velazquez@ife-group.com